

Waste Management & Recycling Plan

LOT 9, Queensbury Road, Padstow Height, NSW

Bingo Group offers a complete, comprehensive solution to the management and recycling of wastes to assure compliance with clients' waste management policy.

Bingo Recycling Centre Auburn and Bingo Recycling Centre St Peters combine bin storage, waste collection, waste recycling and waste transfer to service the building and construction industry and domestic waste management needs in the Sydney metropolitan area. Wastes collected by Bingo Skip Bins are taken directly to either facility where approximately 85 - 90% of wastes are converted to recovered resources.

Bingo Recycling Centre Auburn	Bingo Recycling Centre St Peters
3-5 Duck St, Auburn	6-10 Burrows Rd South, St Peters
EPL No. 10935	EPL No. 13142

As can be expected waste materials inwards vary considerably and are delivered to the Recycling Centres in tipping and non-tipping vehicles or in skip bins. Of the wastes inwards approximately 85 - 90% is recovered and recycled as materials outwards and the balance 10 - 15% to landfill. Waste materials inwards are processed to achieve the maximum recovery of resources and the minimum of un-recoverable material for offsite disposal.

Typical Composition of Bingo's Wastes Inwards

Wastes Inwards	Percentage (approx.)
Heavy Recyclable Materials	45%
Light Recyclable Materials	35%
Metals	10%
Non-Recyclable Materials	10%
Total	100%

Heavy Recyclable Materials:

- Soil
- Dirt
- Sand
- Rubble
- Brick
- Concrete
- Tiles
- Stone
- Asphalt

Light Recyclable Materials:

- Timber
- Green Waste
- Cardboard/ Paper
- Plastic/ Polystyrene
- Plasterboard/ Gyprock

Metals:

- Ferrous (steel, black iron)
- Non-Ferrous (copper, wire, aluminium, stainless)

At the Resource Recovery Facility a simple and effective waste processing procedure is applied. See Materials Flow Diagram (below). Wastes inwards unloaded onto the sorting area where the waste is raked with a hydraulic excavator to expose the contents and where recyclable materials are hand and machine sorted. The raking process separates the waste into four streams for further processing.

Stream #1 Non-recyclable materials. These wastes pass to a holding area for off-site disposal.

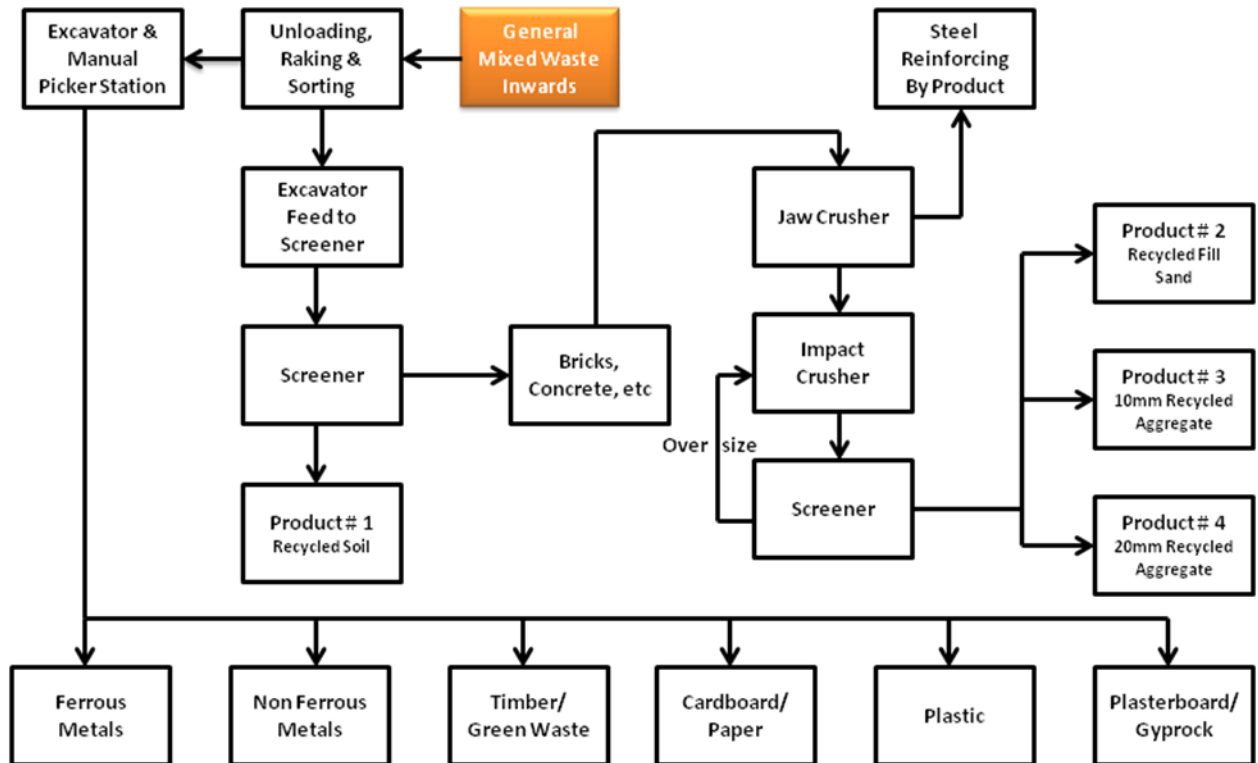
Stream #2 Metals and light recyclable materials are removed and stored for off-site recycling.

Stream #3 Large sized heavy weight brick, concrete and rubble pieces. These wastes pass to the crushers where they are crushed and re-enforcing fabric removed. The output from the crushers passes to the screener where products of different size are separated and stored in stockpiles. Re-enforcing fabric is collected and stored in the general steel bin for off-site recycling.

Stream #4 Small sized heavy weight soil, sand, brick, concrete and rubble. These wastes pass to the screener where the soil is separated from the brick, concrete and rubble. The brick, concrete and rubble then pass through Stream #3.

Stream #1 wastes are currently not recyclable and are removed from the land for offsite disposal. Stream #2 wastes, recovered metals and light recyclable materials are recycled off-site. Stream #3 and Stream #4 wastes are processed on site by crushing and screening to form saleable products such as soil, sand, and aggregates. These products are retained on site until sold.

Bingo Recycling Centre
Waste Transfer & Materials Recovery Facility
Flow Diagram



In summary, Bingo Skip Bins take all their mixed waste skip bins directly to Bingo Recycling Centres. From there the waste is sorted and separated into the following material classes for processing and recycling.

Type of Material	Where Processed/ Recycled	How Processed/ Recycled
Heavy Recyclable Materials (soil, dirt, sand, rubble, concrete, brick, tiles, asphalt, stone)	Bingo Recycling Centres	Re-processed into recycled products (such as recycled soil, fill sand, aggregates, roadbase) by crushing and screening.
Timber/ Green Waste	Bingo Recycling Centres	Re-processed into woodchip and mulch by shredding.
Metal/ Steel	Sell & Parker	Sent to appropriate recycling plants.
Cardboard/ Paper/ Plastic	Cardboard King	Sent to appropriate recycling plants.
Plasterboard/ Gyprock	ReGyp	Sent to appropriate recycling plants.
General Waste	SITA Landfill/ Genesis Landfill	n/a